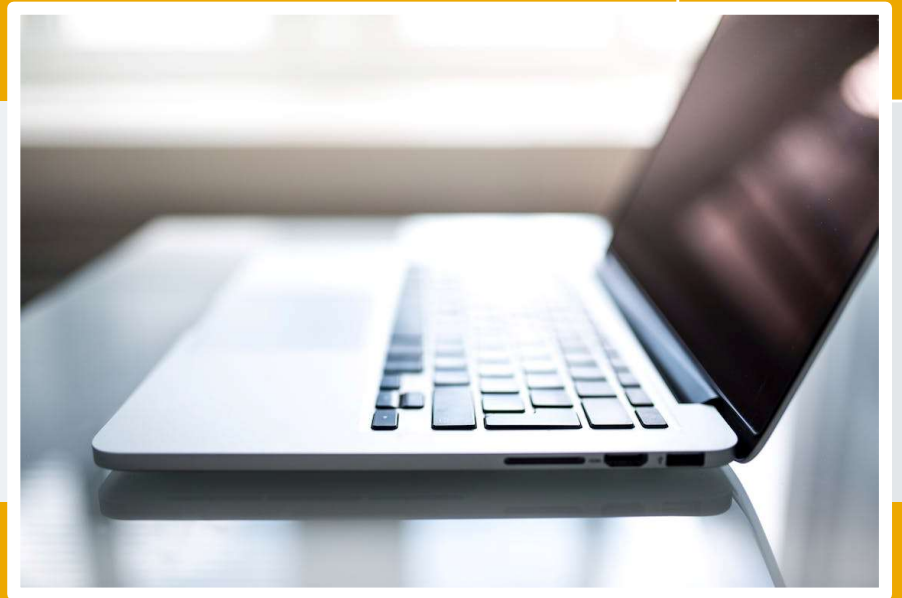



# eClaims

April 2024



# Agenda

1. **Table changes effective 4/18/2024**
2. **Most frequent errors returned during the last 90 days**
3. **Payer information on Board's website**
4. **Questions**



**October 2023 eClaims  
change log/table changes  
published with new edit  
effective 4/18/2024**

**BETTER FOR WORKERS**

**New York State Workers' Compensation Board**

**BETTER FOR BUSINESS**

## October 2023 eClaims change log published announcing edits to be implemented on 4/18/2024

Item #	Document	Item	Description of Change	Publish Date	Implementation date
376	Edit Matrix - Population Restrictions Edit Matrix - DN Error Message Table	DN0299 (Award/Order Date)	<p>New Population Restriction on DN0299 Award/Order Date for Error 044.</p> <p>New Population Restriction: Date must not be &gt; than the date the WCB received the transmission + 35 days. Effective 4/18/2024. Element Error Text: must not be &gt; WCB received transmission + 35 days</p> <p>Also an "L" was added to the 0299-044 coordinate. This is the first Error 044 that we are adding to this DN.</p>	10/16/2023	4/18/2024

This new Population Restriction will verify that the Award/Order Date is not more than 35 days in the future.

- As we previously did not allow the date that far in the future, this is more of a relaxed edit for Trading Partners. As the Board issues proposed awards that do not become final for 30 days, we are allowing the Award/Order Date to be listed as a future date as some payers, who agree with the decision, pay the award right away vs. waiting for the decision to become final.

# Most Frequent Errors Returned During the Past 90 Days

## Population Restriction 0085-064A

This most common error for the last 90 days as well as the top error for 2022 and 2023 was a carryover edit from eClaims R3.0. The population restriction is intended to prevent a new DN0085 (Benefit Type Code) from being introduced as a sweep benefit if not previously submitted as an Event Benefit or a SROI-UR(G)/SA included the Benefit Type Code. This is based on the IAIABC Claims EDI Section 4 rules. FTP filers should ensure that their systems are programmed accordingly to avoid further rejections.

DN	Report or MTC	Data Element Name	Population Restriction	Error Message Number	Error Message Text	Element Error Text (DN0291)	Length of G	Length of column, 50 pos allowed
0085	ALL except UR(G)	Benefit Type Code	A) If DN0002 (Maintenance Type Code) is not UR(G), then DN0085 (Benefit Type Code) other than 2xx or 5xx cannot be sent on a sweep benefit unless previously sent on any prior SROI unless no SROI has been accepted or if there have been only SROI-SA or SROI-UR(G) accepted.	064	Invalid data relationship	sweep BTC must have event BTC or on UR(G)/SA	25	44

## Population Restriction 0075-064C

The second most common error returned in the past 90 days is also an eClaims R3.0 carryover to ensure that DN0075 (Agreement to Compensate Code) is sent as “With Liability” after the Board has issued a Notice that the case has been established with an ANCR/ODNCR finding in accordance with § 21-a. FTP filers should ensure that their systems are programmed accordingly to avoid further rejections.

DN	Report or MTC	Data Element Name	Population Restriction	Exception	Error Message Number	Error Message Text	Element Error Text (DN0291)	Length of G	H, 50 pos allowed
0075	All SROI except SA	Agreement to Compensation Code	C) SROI (exc SROI-SA) cannot list Agreement to Compensate Code – W if ANCR/DNCR has been established (excluding 25(1)(f) cases or ANCR/ODNCR finding pending appeal). Effective 3/15/2018	Effective 11/17/19, this edit will not be applied if DN0059 (Manual Classification Code) has been accepted as 7711 or 7370.	064	Invalid data relationship	Must be L since ANCR/ODNCR has been established	25	47



## Population Restriction 0281-064C

The third most common error returned in the past 90 days is one that we have never seen in the Top Ten. This is a Population Restriction edit that we began with the NYS R3.1 Implementation on 1/24/2022. The intent of this edit is to align lost time/knowledge dates in a logical timeline.

On 1/18/2024 we implemented changes announced on the Claims Change log ID#361 published 7/14/2023 to change severity rankings on several DN's from NA to AR (primarily on the SROI-SA) to resolve the issue that had been reported by several trading partners regarding the latest value recognized in our system.

Once DN0281 became AR on 1/18/2024, edits were applied. It is apparent that some trading partners had been sending DN0281 on the SROI-SA for years, but edit 0281-064C didn't apply until the severity ranking was changed from NA to AR. Please make changes in your system accordingly to avoid this rejection in the future.

DN	Report or MTC	Data Element Name	Population Restriction	Exception	Error Message Number	Error Message Text	Element Error Text (DN0291)	Length of G	Length of col H, 50 pos allowe
0281	ALL	Initial Date Employer Had Knowledge Of Date Of Disability	C) DN0281 (Initial Date Employer Had Knowledge Of Date Of Disability) must be on or after DN0056 (Initial Date Disability Began) effective New York's EDI 3.1 Implementation Date (1/24/2022)		064	Invalid data relationship	must >=Initial Date Disability Began	25	36



# Payer information posted on Board's website



## Payer requirements resources now available

The Workers' Compensation Board (Board) is excited to announce a new, one-stop-shop for payers outlining what they need to know about navigating the New York State workers' compensation system.

The new [What Payers Need to Know](#) section of the Board's website walks payers through [getting started](#) in the workers' compensation system, [becoming a trading partner](#), [administering claims](#), and more. The page also includes a [Payer Updates](#) section that features the latest news for payers, which is updated regularly.



## Board to index every complete case by mid-2024

To provide clarity and promote efficient resolution of workers' compensation claims, the Board plans to begin indexing every complete case by mid-2024.

This means that every case with an *Employee Claim (Form C-3)* or First Report of Injury (FROI) and a medical report of treatment will be indexed by the Board. Following indexing, any denial of the claim must be filed with the Board within 25 days of the date of indexing or defenses listed in Workers' Compensation Law Section 25(2)(b) will be barred.

Read more in [notification dated December 15, 2023](#).

## OnBoard - Multifactor Authentication (MFA)

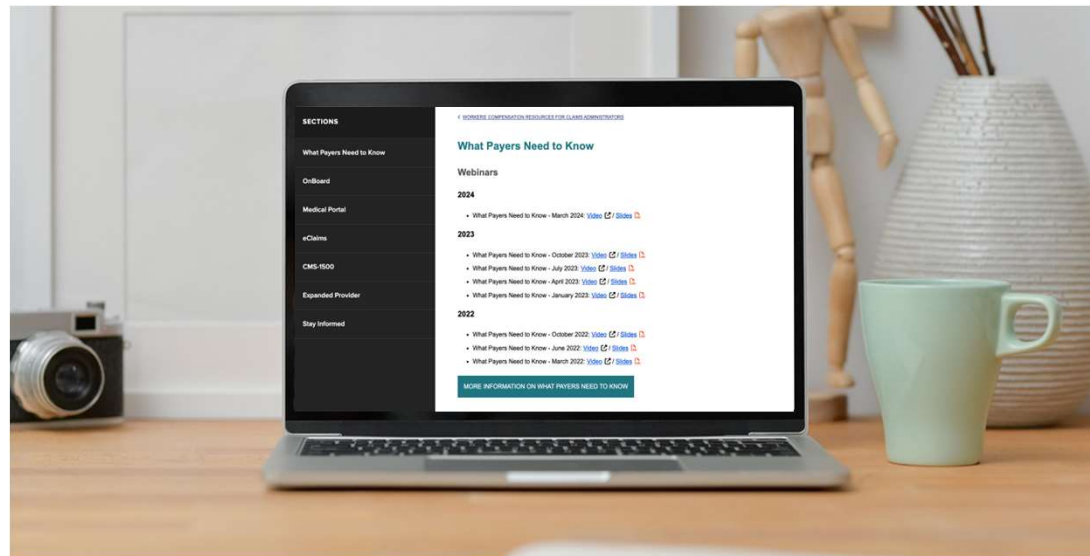
- MFA implemented on Friday, March 22<sup>nd</sup>.
- MFA provides additional layers of protection for accessing sensitive information that may be stored within an OnBoard account.
- To prevent loss of access to MFA, users should set up as many as authentication methods as possible.
- Instructions, including how to add/update authentication methods, may be found on the MFA Instruction page: <https://www.wcb.ny.gov/mfa/>.



## Stay Informed!

Visit the Board's [Payers Recorded Webinars and Guides web page](#) for past webinars.

To receive notifications from the Board straight to your inbox, [subscribe for Board updates](#).





**Workers'  
Compensation  
Board**

**Thank you**

**Questions?**

# Follow the Board



@NYSWorkersComp



@NYSWCB



@NYSWorkersCompBoard



[youtube.com/NewYorkStateWorkersCompensationBoard](https://youtube.com/NewYorkStateWorkersCompensationBoard)



[wcb.ny.gov/Notify](mailto:wcb.ny.gov/Notify)